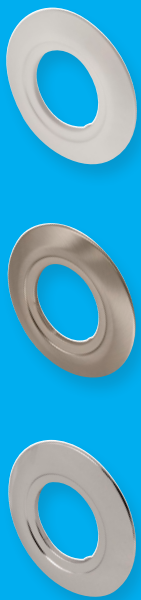
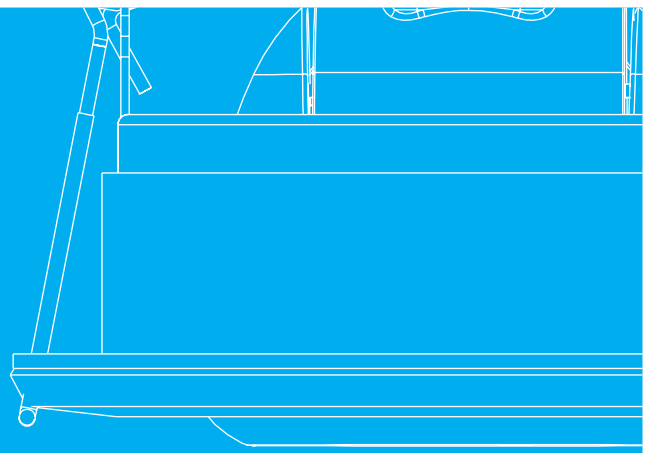


INCEPTOR[®] NANO⁵

4.8W FIRE-RATED LED DOWNLIGHT

Shallow recess depth with a powerful SMD light source, paired with a 40° Multi-faceted, Halogen effect lens for exceptional light quality.



IP54

PRE-WIRED
flow[™]
CONNECTOR

IP65

Features & Benefits



40°
Beam Angle



30, 60 and 90
Minute Fire-Rating



25,000
Hour Lifetime



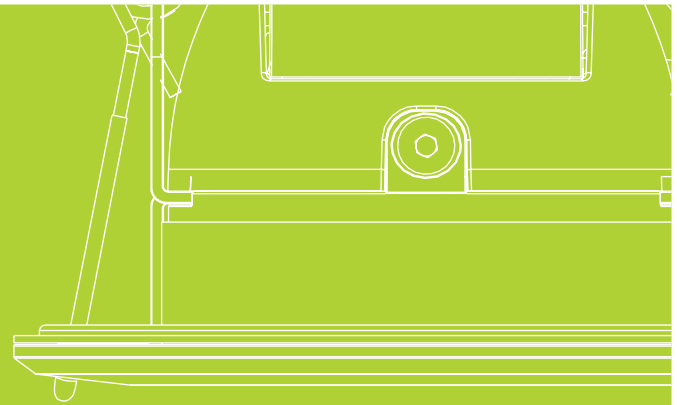
Dimmable
as Standard



3 YR
WARRANTY
3 Year
Warranty

INCEPTOR® NANO⁵

4.8W FIRE-RATED LED
DOWNLIGHT



Fixed

50MM



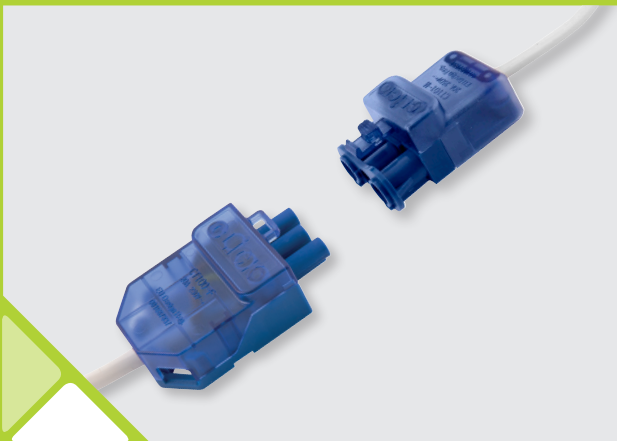
Adjustable

54MM



Integrated Flow™ Connector

An integrated 3 Pole Flow™ connector allows for quick and simple connection & disconnection for initial and periodic testing to be carried out.



Insulation Support Bracket

Sold Separately - the removable Insulation Support Bracket has been developed to allow installers to lay thermal insulation directly over the top of the Inceptor® Nano⁵. Creating a 20mm air-space above the driver allows air to circulate and cool, therefore the driver dissipates heat more effectively and in-turn lets the luminaire run cooler.

Product Code: OVISC1020

