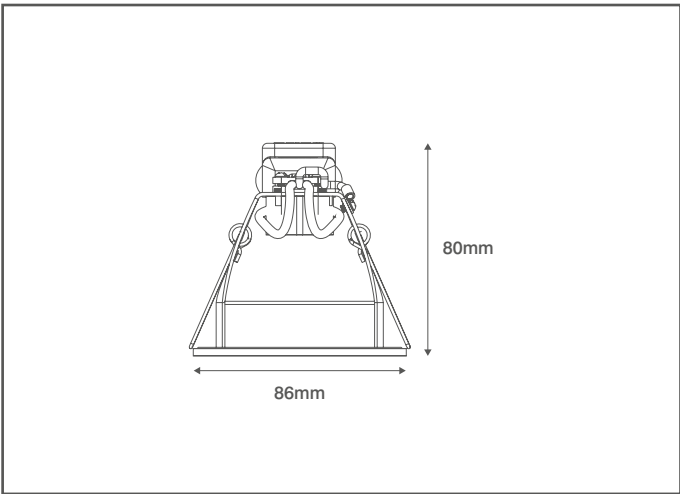
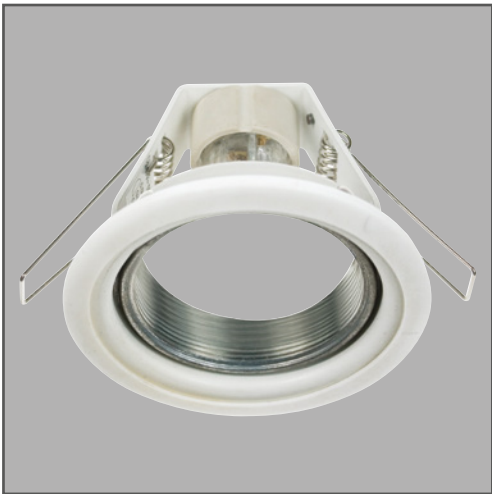


Technical Specification

Product Code: OVGZ096

Description: 50W Max. GZ10/GU10 Downlight Frame - (IP65 With Bezel)



General Information

Dimensions	86mm Diameter x 80mm (D)
Recess Depth	80mm
Materials	Frame: Powdercoated Steel Terminal Housing: Thermoplastic
Finish	White
Product Weight	0.25Kg
Cutout	75mm Diameter
Ingress Protection	IP65
Ceiling Thickness	15mm Max.
Warranty	1 Year

Supply & Power

Input Voltage	230V~
Electrical Safety	Class I
Input Power	Lamp Dependant
Termination	3 Pole Screw Terminal Block

Luminaire Information

Lamp Type	Accepts Both GZ10 & GU10
Lamp Wattage	50W Max.
Recommended Lamp Length	54mm (Overall)
Suitable Lamp Types	LED & Halogen
Output Information	See information supplied with lamp being installed

Accessories

OVGF495WH	Cast IP65 Bezel - White
OVGF495CH	Cast IP65 Bezel - Chrome
OVGF495SC	Cast IP65 Bezel - Satin Chrome